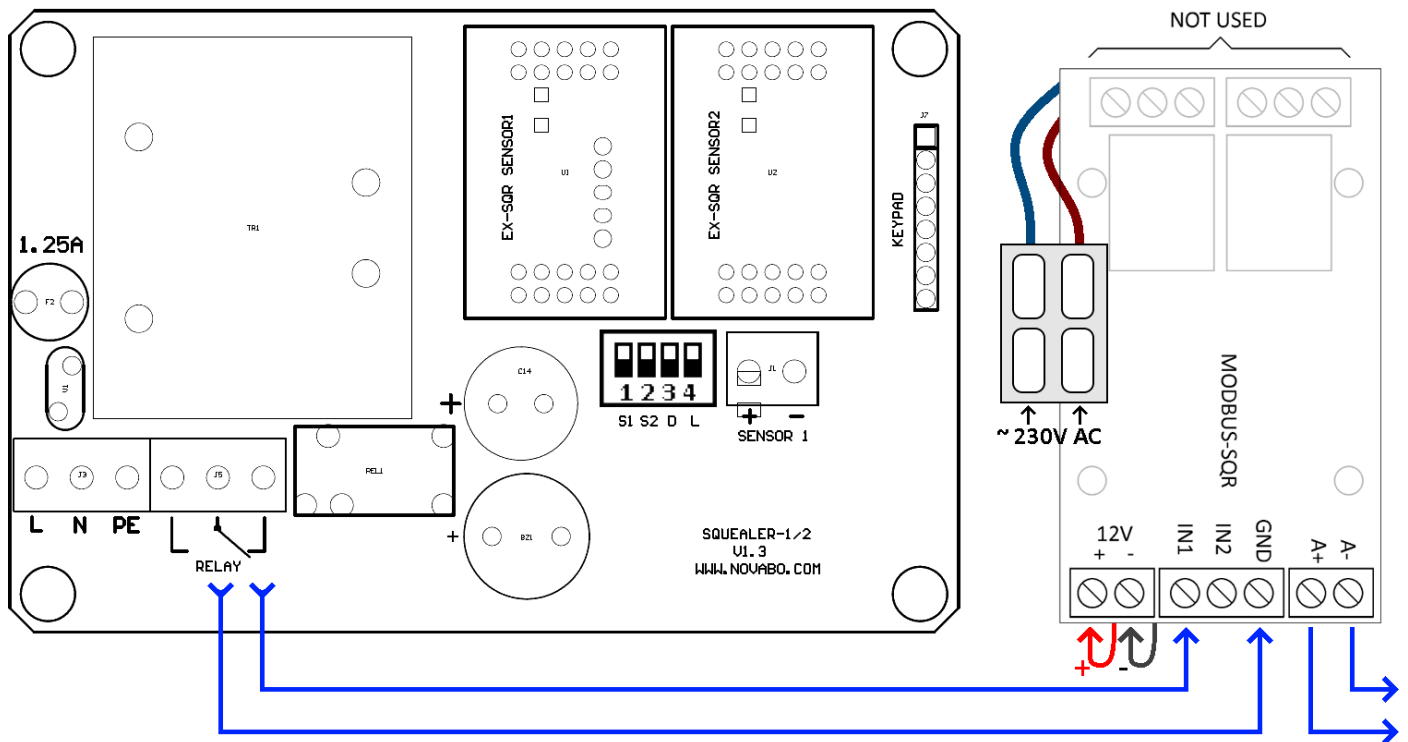


MODBUSRTU-SQR

– A device used to transmit the status of relays from the Squealer-1/2 controller to the BMS monitoring station using the MODBUS-RTU protocol.



- Communication parameters**
- Transmission speed: 9600bps,
 - Device address: 255,
 - Power supply voltage: DC7-24V,

- Connector description:**
- A-, A+ - MODBUS-RTU signal
 - GND - ground
 - IN1, IN2 - inputs
 - 12V - power supply

Communication description - The ModbusRTU frame consists of the device address, function code, register address, register data, and checksum. The length of the frame is associated with the function code.

Query about alarm status:
FF 02 00 00 00 08 6C 12

Response from the device:
FF 02 01 01 51 A0 – OK (normal status)
FF 02 01 00 90 60 – ALARM (alarm status)

Instruction for safe use- The device should be used according to its intended purpose. Before installation, please read the device's manual. In the case of installation, servicing, inspection, and repairs in areas with a potentially explosive atmosphere, the regulations and standards applicable in the respective country must be followed.