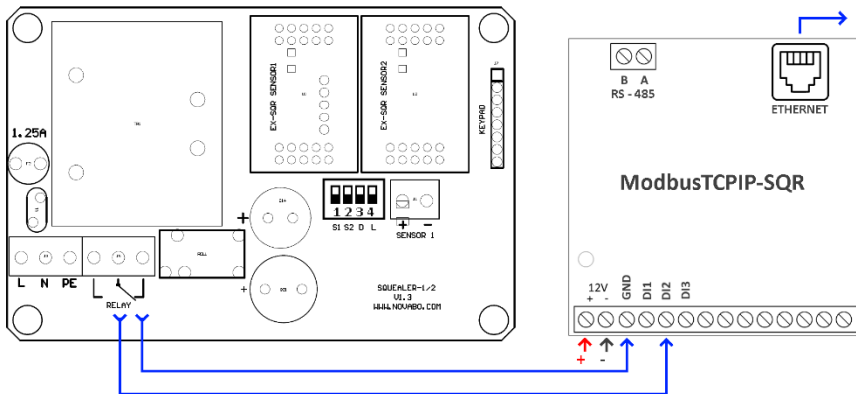


MODBUSTCPIP-SQR

☒ – A device used to transmit the status of relays from the Squealer-1/2/3 controller to the BMS monitoring station using the MODBUS-TCP/IP protocol.



Communication

parameters:

- Transmission speed: 9600bps (customizable),
- Connection mode: TCP Slave

Connector Description:

- 12V+- - Power supply
- B, A - RS485 Signal
- DI1, DI2, GND – Input Signals

Communication description:

01 00 00 00 00 06 01 05 00 00 FF 00

1 2 3 4 5 6 7

- 1 - Transaction ID
- 2 - Protocol identifier
- 3 - Length

- 4 - Modbus address
- 5 - Function code
- 6,7 - Data

Query about alarm status:

01 00 00 00 00 06 01 02 00 00 00 02

Example answers:

01 00 00 00 00 04 01 02 01 00
OK (normal state)

Response from the device:

W przypadku zapytania o stan wejść ostatnie 8 bitów oznacza odpowiedź z zakresu 00 - FF. Wartości kolejnych bitów oznaczają stany poszczególnych wejść.

01 00 00 00 00 04 01 02 01 01
Triggered input 1

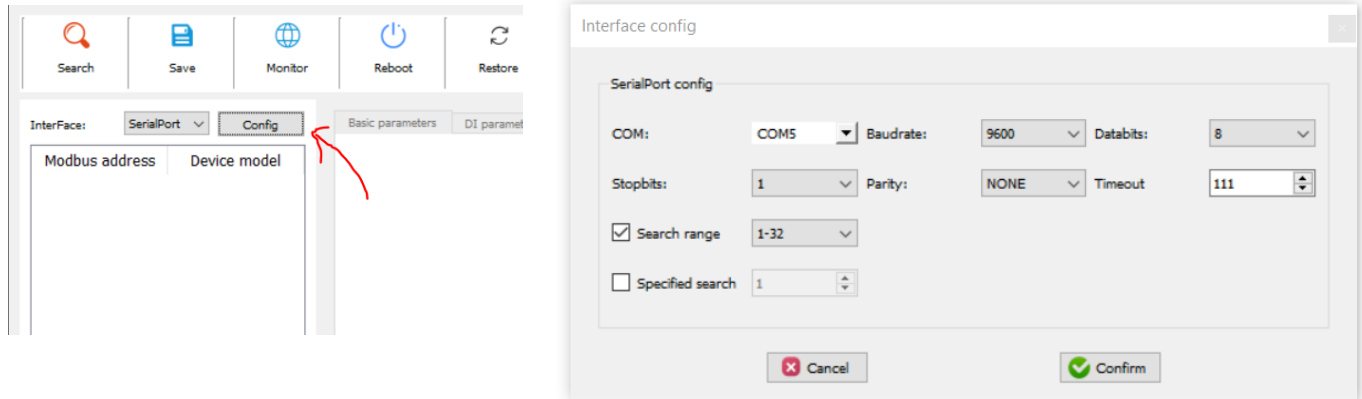
01 00 00 00 00 04 01 02 01 06
Triggered inputs 2 & 3

Technical Data:

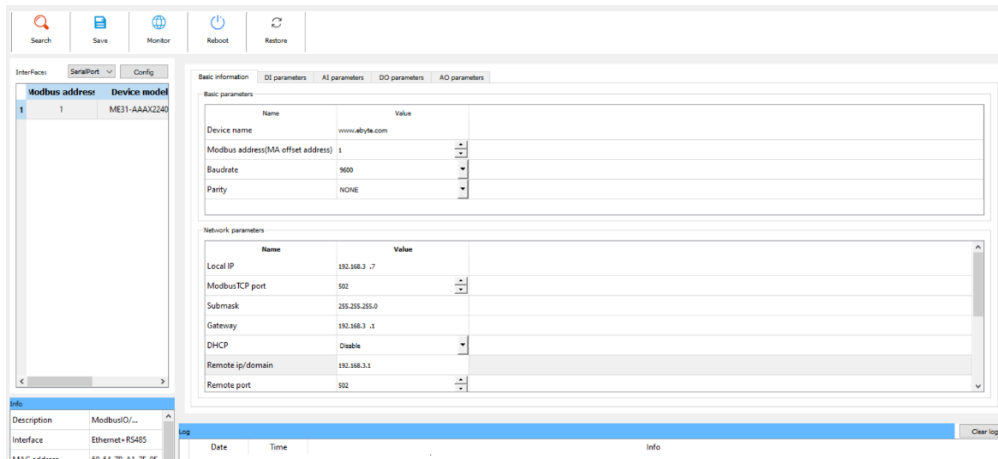
Power supply:	DC 8-28V
Inputs:	8DI, Ethernet, RS-485
Operating temperature:	-40°C ÷ +85°C
Operating humidity:	5% ~ 95%RH
Transmission speed:	1200bps - 115200bps
Connection mode:	TCP Slave (z dostępem do 4 klientów jednocześnie)
Dimensions (without cable glands):	121 x 72 x 34 mm

First Configuration:

1. Download the Modbus Config.exe program from our website novabo.com. You will find it under the tab: Products > Alarms for separators > Accessories > MODBUSTCPIP-SQR
2. Connect the RS485-USB adapter to the device via the 485 connector and to the computer via the USB connector. Power on the device.
3. Run the Modbus_Config.exe program on the computer.
4. From the window on the left, select the "Serial port" interface option, choose the COM port to which the adapter is connected, set the other parameters as shown in the picture, and press the "Search" button.



5. On the right side, change the network settings to match your local network.



Instructions for Safe Use:

The device should be used according to its intended purpose. Before installation, please read the device's manual.

In the case of installation, servicing, inspection, and repairs in areas with potentially explosive atmospheres, the regulations and standards applicable in the respective country should be followed.

NOVABO

tel.: +48/58-746-37-73

www.novabo.com , novabo@novabo.com

NOVABO™
measurement and automation